

50mmx50mm

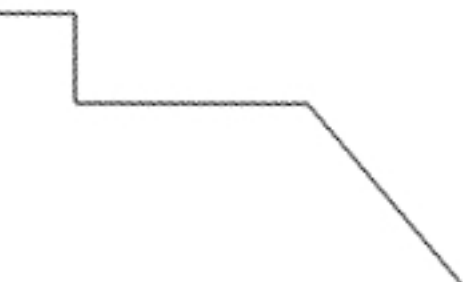


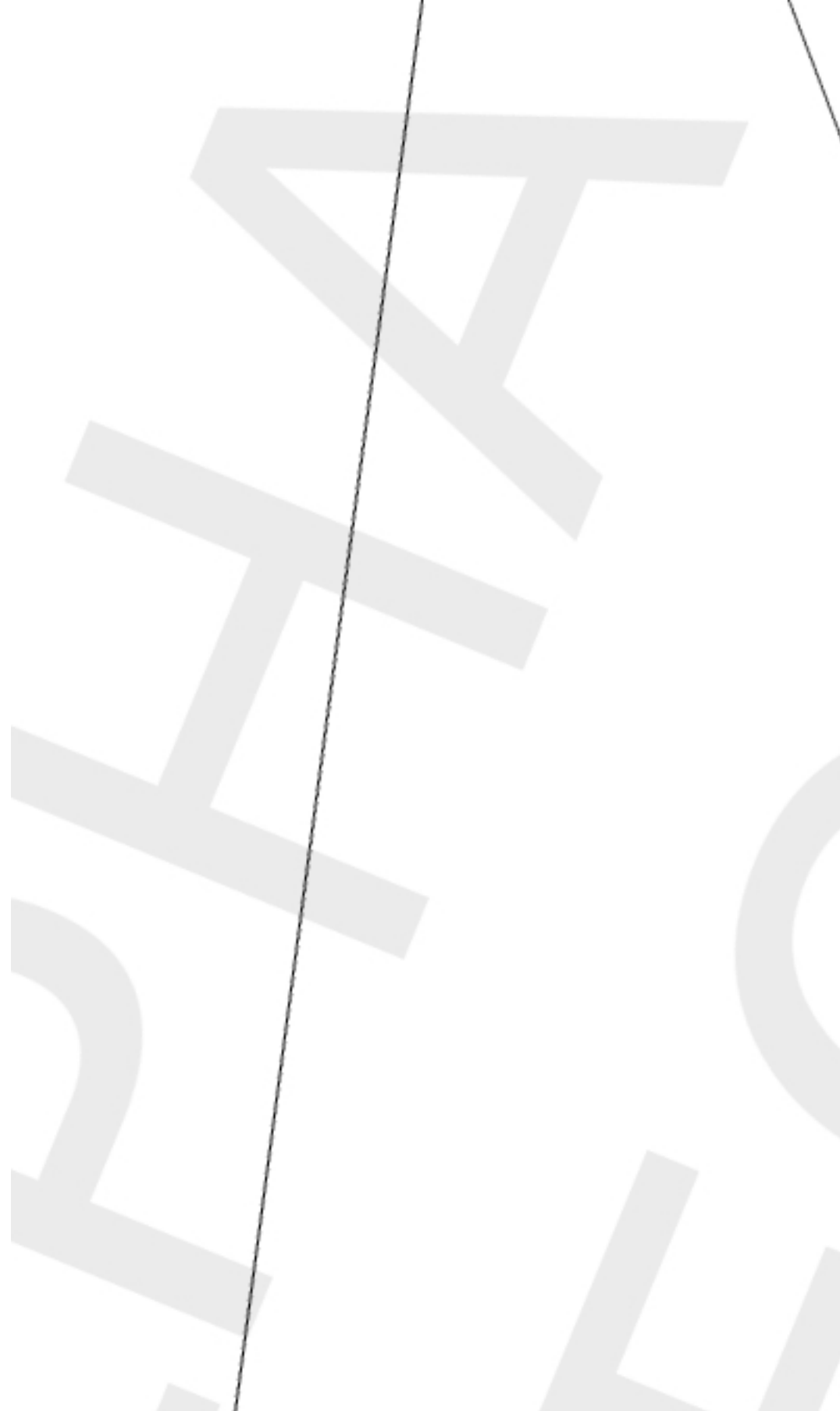
**w**

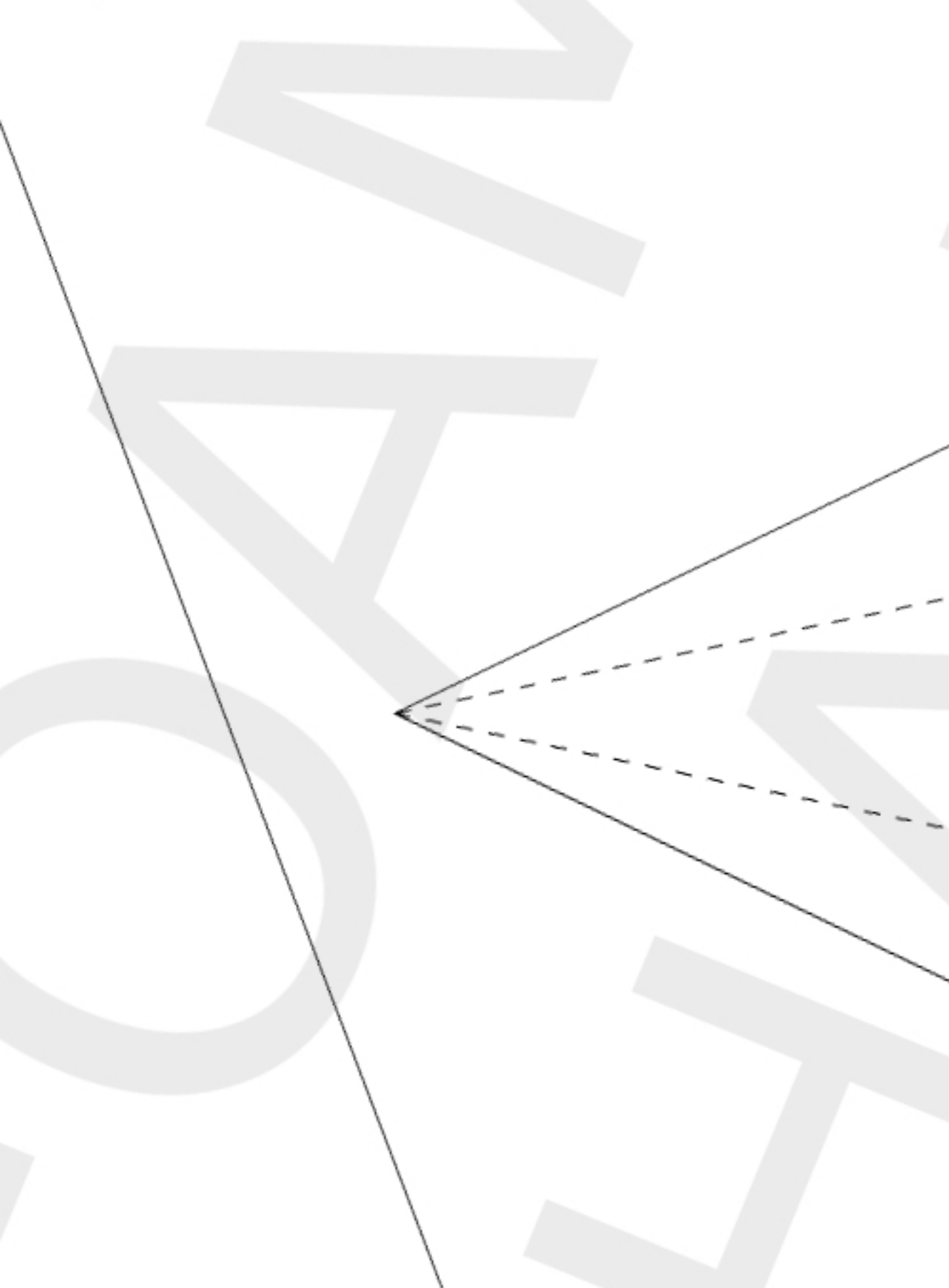
[www.frcfo](http://www.frcfo)

amies.co

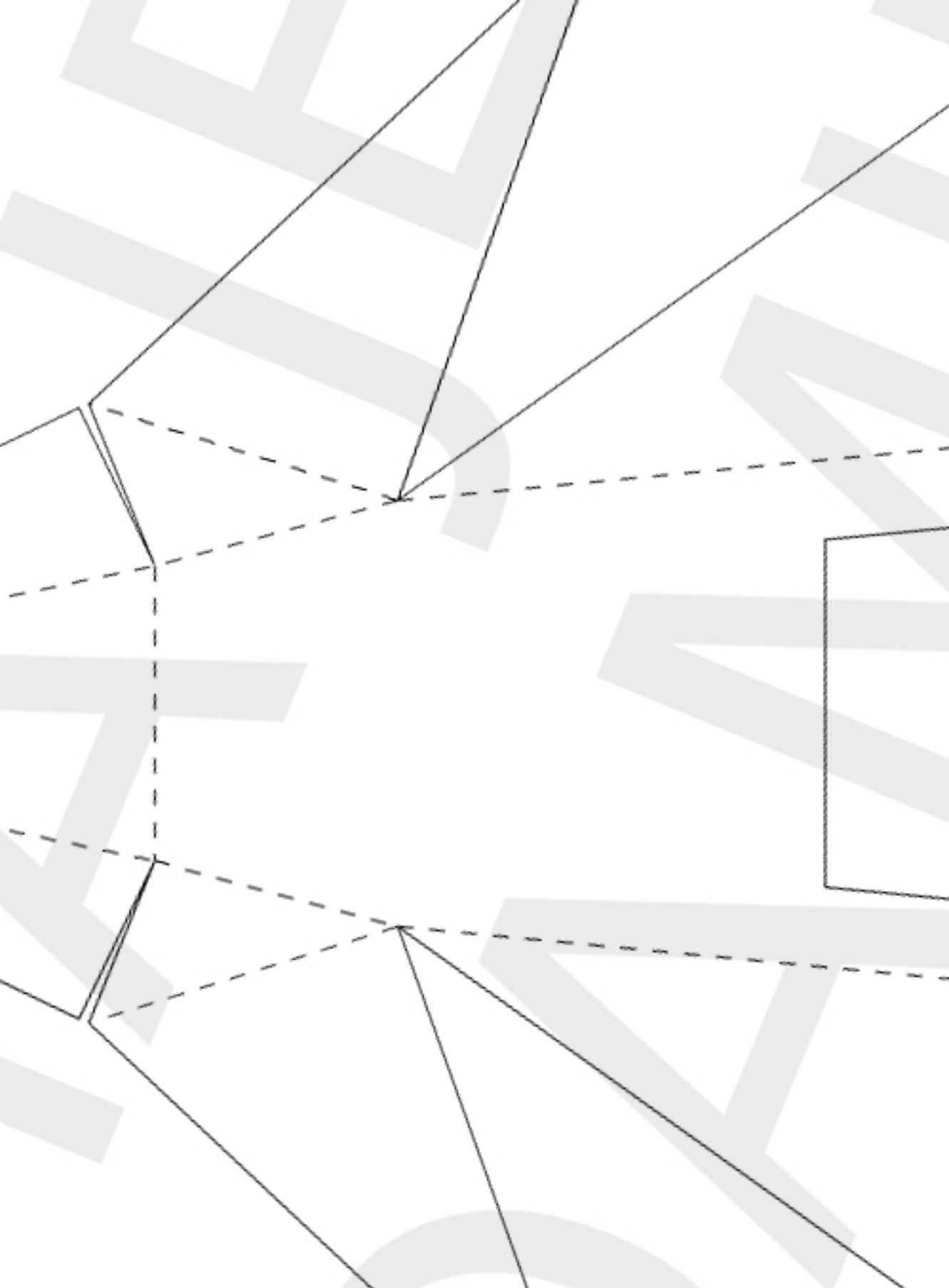
m





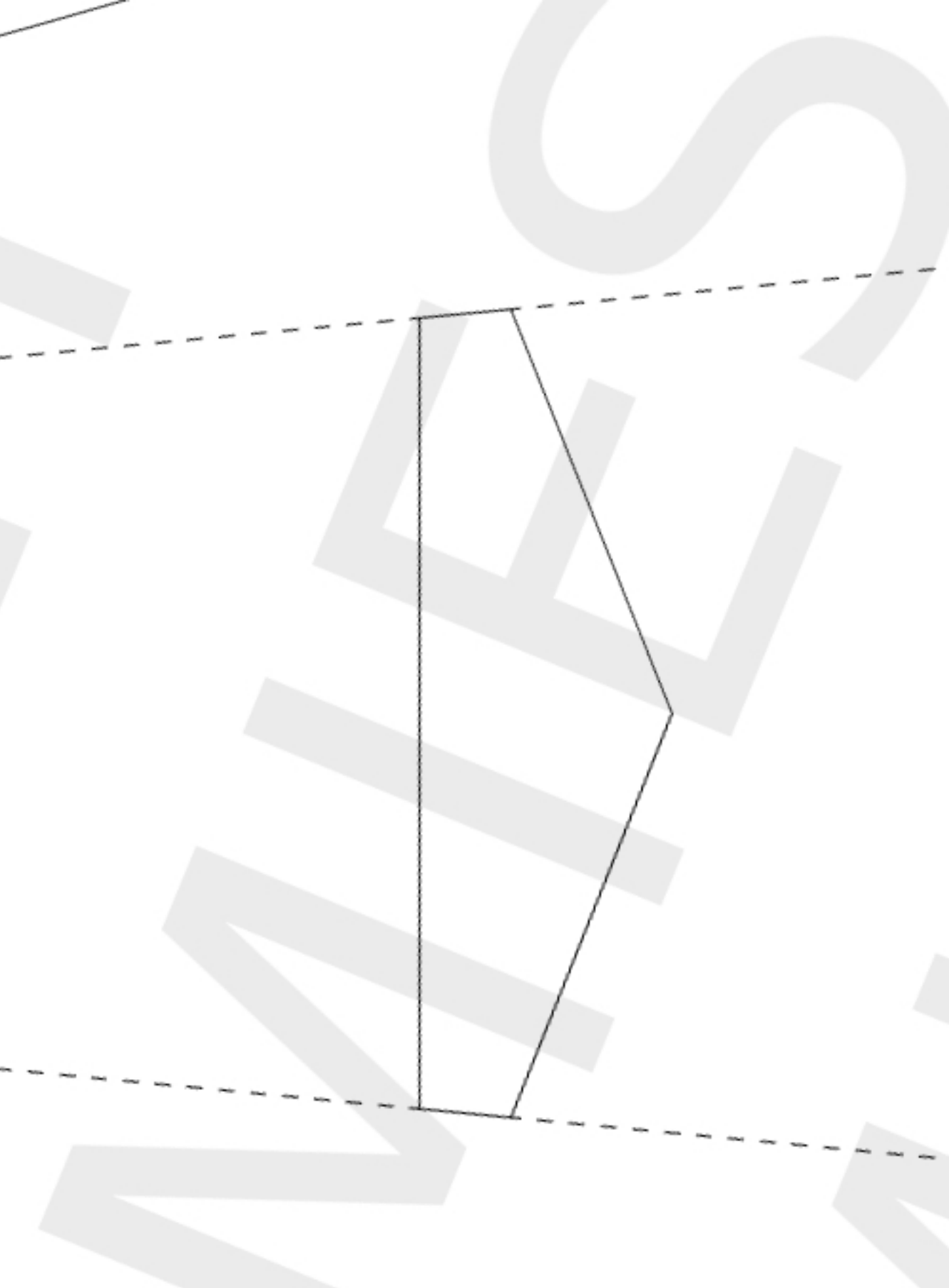


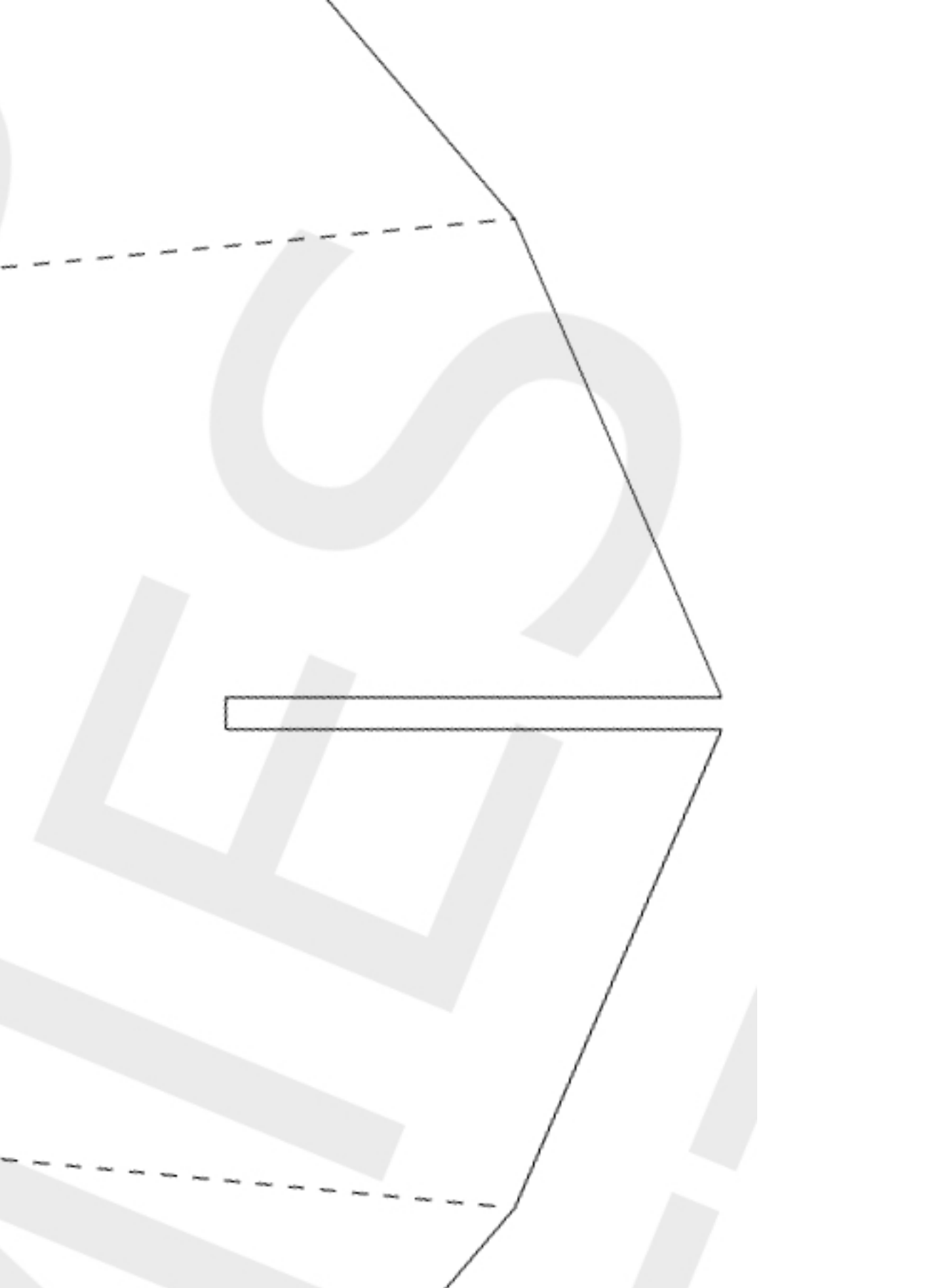




The background features a complex geometric pattern. It includes several overlapping, semi-transparent light gray shapes that resemble stylized letters or symbols. A network of thin black lines crisscrosses the page, including a prominent dashed line that runs diagonally from the upper left towards the lower right. A solid black line forms a large, irregular rectangular frame that encloses the central text.

HATCH





TOP W  
X2

ING

TOP MO  
MOU

MOTOR  
MOUNT

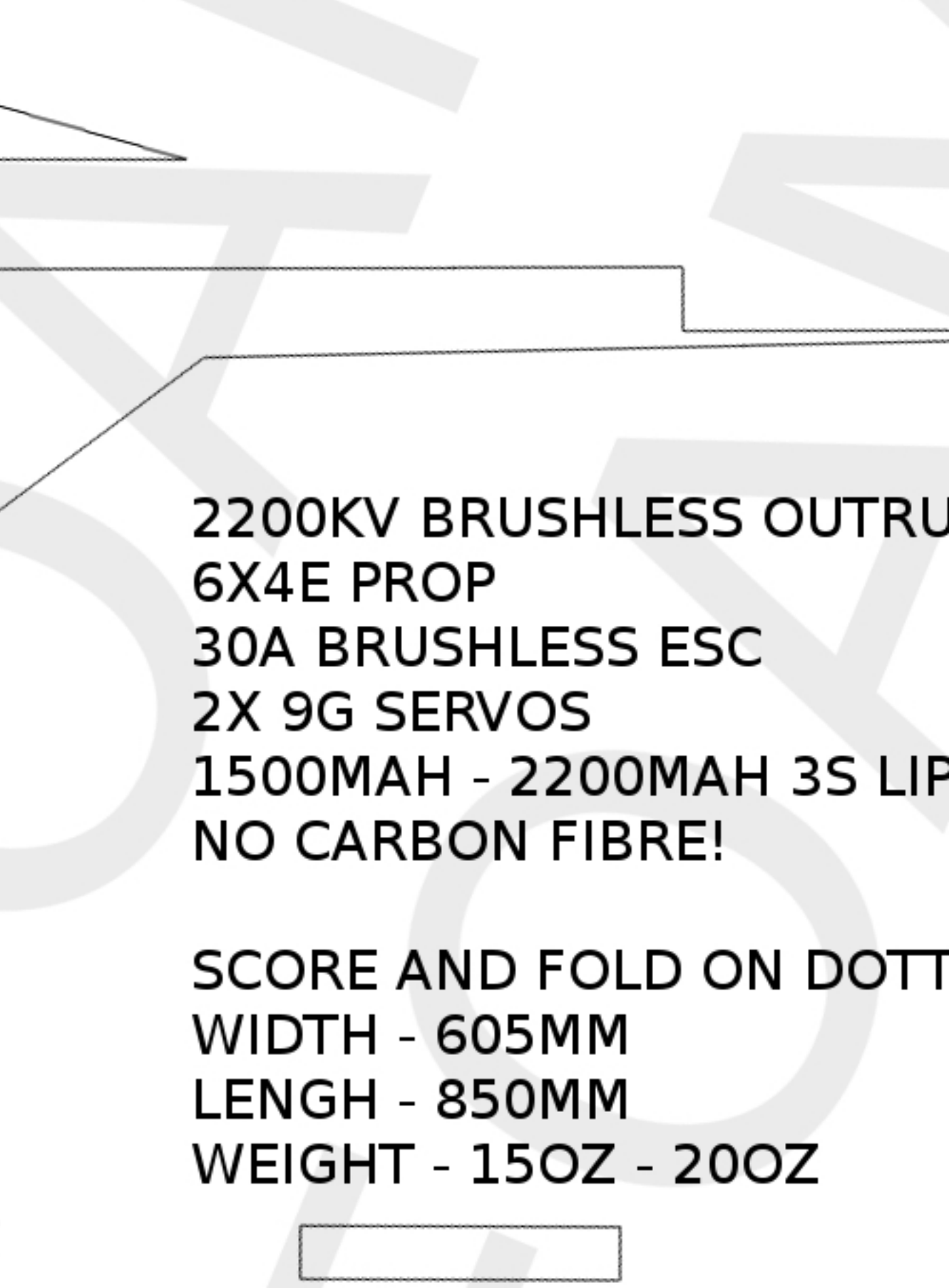
PLY  
MOUNT



A technical drawing of a mechanical part, possibly a bracket or a connector, shown in two views. The top view is a complex shape with multiple steps and a central rectangular cutout. The bottom view is a simpler, more rectangular shape. The drawing is overlaid with a large, faint watermark that reads "Copyright © 2010".

**X2**





2200KV BRUSHLESS OUTR  
6X4E PROP  
30A BRUSHLESS ESC  
2X 9G SERVOS  
1500MAH - 2200MAH 3S LIP  
NO CARBON FIBRE!

SCORE AND FOLD ON DOTT  
WIDTH - 605MM  
LENGH - 850MM  
WEIGHT - 15OZ - 20OZ



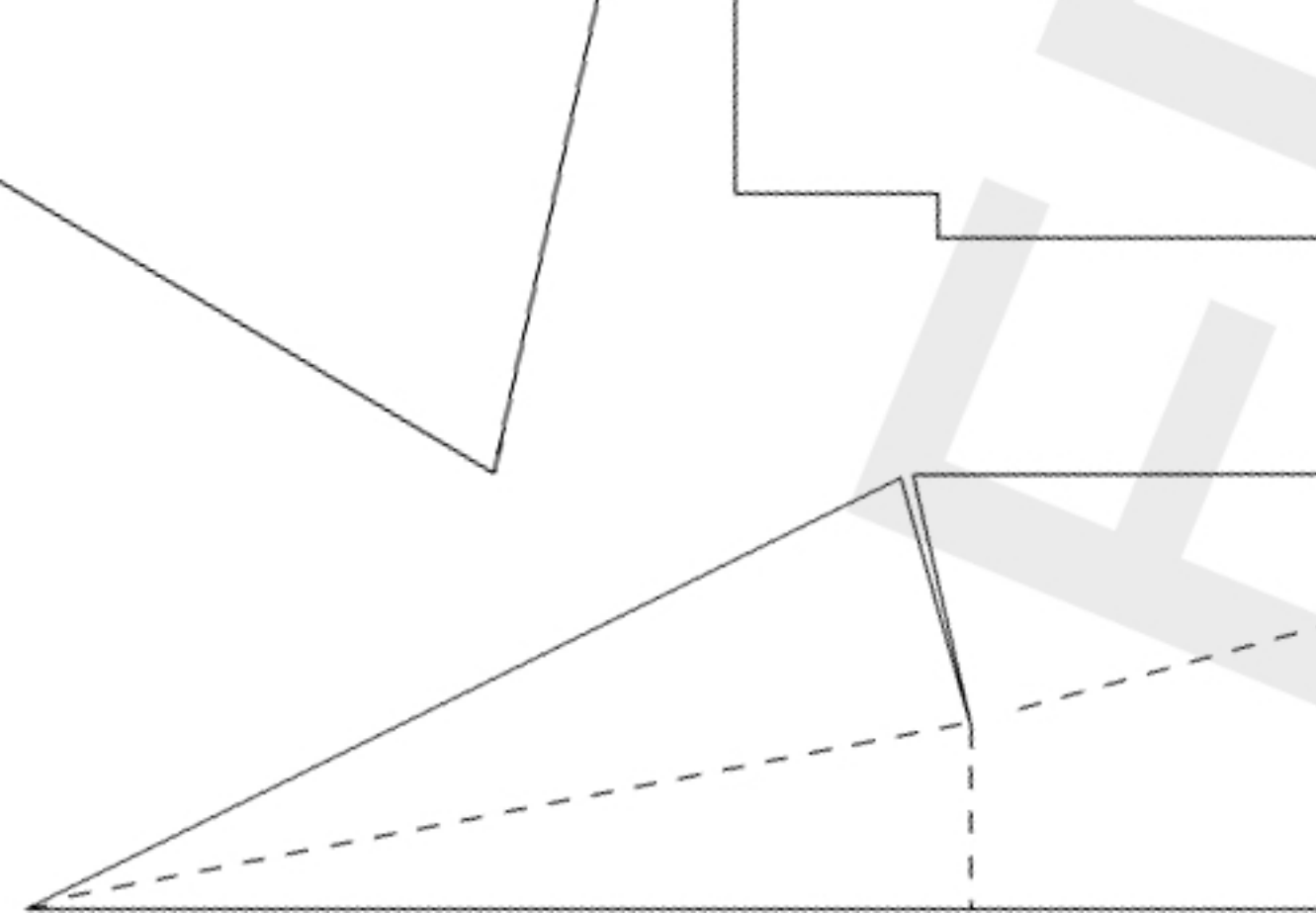
The background features several large, light gray geometric shapes, including triangles and polygons, some of which are partially cut off by the edges of the page. A network of thin black lines is overlaid on these shapes, forming a complex, interconnected pattern. Some lines are straight, while others are slightly curved or stepped.

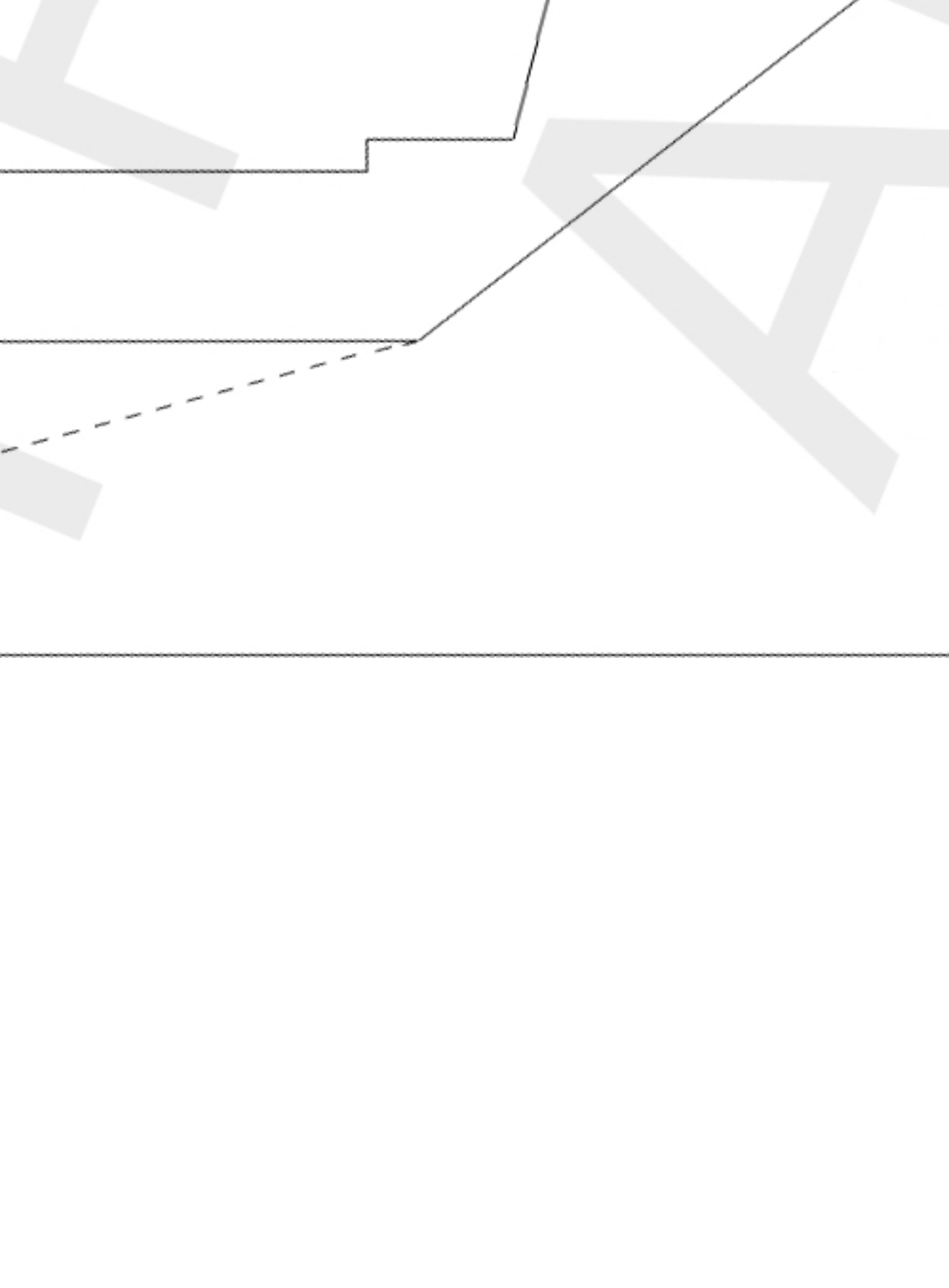
INNER

PO

ED LINES

DESIGNED AND  
TESTED BY  
JAY ROTHWELL  
GREG STRYSKY  
LAST UPDATE 11/03/2013







HIGH  
ALPHA  
CG



STOCK  
CG





X2  
MAIN WING

G